

## Biotin Anti-Mouse CD8a Monoclonal Antibody



天津三箭生物技术股份有限公司  
Tianjin Sungene Biotech Co., Ltd.  
精准 高效 稳定 Precision Efficient Stable

Catalog Number	Vial Size
M10081-08B	50 µg
M10081-08E	500 µg

**Market** | 400-621-0003  
marketing@sungenebiotech.com

**Support** | 022-66211636-8024  
techsupport@sungenebiotech.com

**Web** | www.sungenebiotech.com

**Important Note:** Centrifuge before opening to ensure complete recovery of vial contents.  
This product is guaranteed up to one year from purchase.

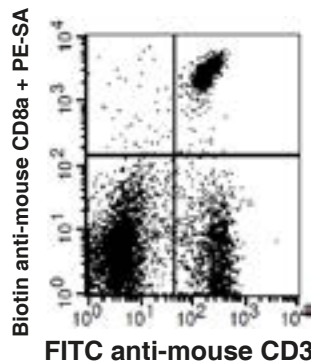
### Purified Antibody Characterization

Clone	Isotype	Reactivity
53.6.7	Rat IgG2a	Mouse

### Description

CD8, also known as Lyt-2, Ly-2, or T8, consists of disulfide-linked  $\alpha$  and  $\beta$  chains that form the  $\alpha$ (CD8a)/ $\beta$ (CD8b) heterodimer and  $\alpha/\alpha$  homodimer. CD8a is a 34 kD protein that belongs to the immunoglobulin family. The CD8  $\alpha/\beta$  heterodimer is expressed on the surface of most thymocytes and a subset of mature TCR  $\alpha/\beta$  T cells. CD8 expression on mature T cells is non-overlapping with CD4. The CD8  $\alpha/\alpha$  homodimer is expressed on a subset of  $\gamma/\delta$  TCR-bearing T cells, NK cells, intestinal intraepithelial lymphocytes, and lymphoid dendritic cells. CD8 is an antigen co-receptor on T cells that interacts with MHC class I on antigen-presenting cells or epithelial cells. CD8 promotes T cell activation through its association with the TCR complex and protein tyrosine kinase lck.

### Illustration of Immunofluorescent Staining



C57BL/6 mouse splenocytes stained with FITC anti-mouse CD3 and Biotin anti-mouse CD8, followed by PE-SA

### Product Information

**Conjugation:** Biotin

**Formulation:** PBS pH 7.2, 0.09%  $\text{NaN}_3$ , 0.2% BSA

**Concentration:** 0.5 mg/ml

**Storage:** Keep as concentrated solution. Store at 4°C and protected from prolonged exposure to light. **Do not freeze.**

**Application:** Recommended Application: FC

**Usage:** Each lot of this antibody is quality control tested by immunofluorescent staining with flow cytometric analysis (The amount of the reagent is suggested to be used  $\leq 0.25 \mu\text{g} / 10^6$  cells in 100  $\mu\text{l}$ ). Since applications vary, the appropriate dilutions must be determined for individual use.

### References

- [1] Shih, F.F., et al. 2006. J. Immunol. 176:3438.
- [2] Bouwer, H.G.A., et al. 2006. P. Natl. Acad. Sci. USA 103:5102.

**For Research Use Only.**